

## KAYNAK BOYUNLU FLANŞ PN 6



TS EN 1092 - 1 + A1 TİP 11  
DIN 2631

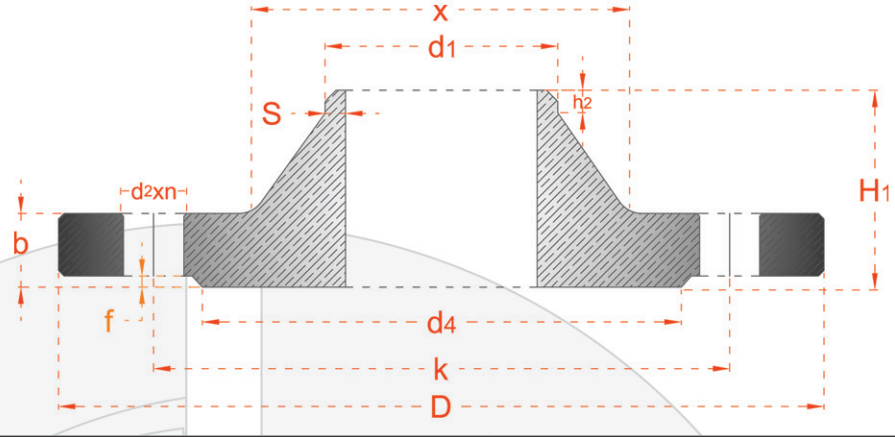


**E.M.P.**  
www.emp.com.tr  
www.empflans.com

## WELDING NECK FLANGE PN 6



EN 1092 - 1 + A1 TYPE 11  
DIN 2631



BORU/PIPE	FLANŞ /FLANGE						BOYUN/ NECK			RAISED FACE		DELİKLER/DRILLINGS			AĞIRLIK /WEIGHT		
	DN	d1	D	b		H <sub>1</sub>		X	S	h2	d <sub>4</sub>	f	k	n	vida/screw	d <sub>2</sub>	DIN /kg
			EN 1092-1	DIN	EN 1092-1	DIN											
10	17.2	75	12	12	28	28	26	1.8	6	35	2	50	4	M10	11	0.33	
15	21.3	80	12	12	30	30	30	2	6	40	2	55	4	M10	11	0.39	
20	26.9	90	14	14	32	32	38	2.3	6	50	2	65	4	M10	11	0.59	
25	33.7	100	14	14	35	35	42	2.6	6	60	2	75	4	M10	11	0.74	
32	42.4	120	14	14	35	35	55	2.6	6	70	2	90	4	M12	14	1.05	
40	48.3	130	14	14	38	38	62	2.6	7	80	2	100	4	M12	14	1.18	
50	60.3	140	14	14	38	38	74	2.9	8	90	2	110	4	M12	14	1.34	
65	76.1	160	14	14	38	38	88	2.9	9	110	2	130	4	M12	14	1.67	
80	88.9	190	16	16	42	42	102	3.2	10	128	2	150	4	M16	18	2.71	
100	114.3	210	16	16	45	45	130	3.6	10	148	2	170	4	M16	18	3.24	
125	139.7	240	18	18	48	48	155	4	10	178	2	200	8	M16	18	4.49	
150	168.3	265	18	18	48	48	184	4.5	12	202	2	225	8	M16	18	5.15	
200	219.1	320	20	20	55	55	236	5.9	15	258	2	280	8	M16	18	7.78	
250	273.0	375	22	22	60	60	290	6.3	15	312	2	335	12	M16	18	10.80	
300	323.9	440	22	22	62	62	342	7.1	15	365	2	395	12	M20	22	14.00	
350	355.6	490	22	22	62	62	385	7.1	15	415	2	445	12	M20	22	18.50	
400	406.4	540	22	22	65	65	438	7.1	15	465	2	495	16	M20	22	16.70	
450	457	595	22	24	65	68	492	7.1	15	520	3	550	16	M20	22	19.00	
500	508	645	24	24	68	70	538	7.1	15	570	3	600	20	M20	22	28.60	
600	610	755	30	24	70	70	640	7.1	16	670	3	705	20	M24	26	31.50	
700	711	860	30	24	76	70	740	7.1	16	775	3	810	24	M24	26	37.40	
800	813	975	30	24	76	70	842	7.1	16	880	3	920	24	M27	30	46.10	
900	914	1075	34	26	78	70	942	7.1	16	980	3	1020	24	M27	30	55.60	
1000	1016	1175	38	26	82	70	1045	7.1	16	1080	3	1120	28	M27	30	61.90	
1200	1219	1405	42	28	104	90	1248	8	20	1295	5	1340	32	M30	33	100.0	
1400	1422	1630	56	32	114	90	1452	8	20	1510	5	1560	36	M33	36	149.0	
1600	1626	1830	63	34	119	90	1655	9	20	1710	5	1760	40	M33	36	180.0	
1800	1829	2045	69	36	133	100	1855	10	20	1920	5	1970	44	M36	39	225.0	
2000	2032	2265	74	38	146	110	2058	11	25	2125	5	2180	48	M39	42	295.0	
2200	2235	2475	81	42	154	115	2260	12	25	2335	6	2390	52	M39	42	361.0	
2400	2438	2685	87	44	168	125	2462	13	25	2545	6	2600	56	M39	42	415.0	
2600	2620	2905	91	46	175	130	2665	14	25	2750	6	2810	60	M45	48	530.0	
2800	2820	3115	101	48	188	135	2865	15	30	2960	6	3020	64	M45	48	643.0	
3000	3020	3315	102	50	192	140	3068	16	30	3160	6	3220	68	M45	48	777.0	
3200	3220	3525	106	54	202	150	3272	16	30	3370	6	3430	72	M45	48	851.0	
3400	3420	3735	110	56	214	160	3475	18	35	3580	6	3640	76	M45	48	993.0	
3600	3620	3970	124	60	229	165	3678	18	35	3790	6	3860	80	M52	56	1,001.0	

Ölçüler mm olarak verilmiştir.  
Çelik ve paslanmaz üretilir.

Dimensions are in mm.  
Steel and stainless steel can produce.