

## KAYNAKLI NİPEL (DİŞLİ BORU PARÇASI)



TS 931  
EN 10241

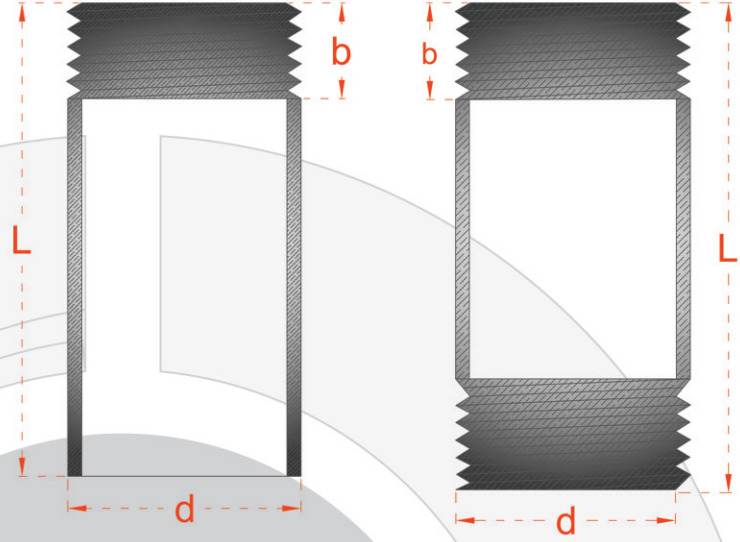
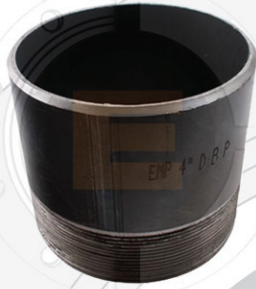


**E.M.P.**  
www.emp.com.tr  
www.empflans.com

## WELDING NİPEL (THREADED PIPE PIECE)



TS 931  
EN 10241



| DN  | PARMAK<br>INCH | DİŞ ÇAP<br>DIAMETER | KISA TİP YÜKSEKLİK<br>SHORT TYPE HEIGHT | DİŞ BOYU<br>GEAR SIZE | UZUN TİP YÜKSEKLİK<br>LONG TYPE HEIGHT |
|-----|----------------|---------------------|---|-----------------------|--|
|     |                | d                   | L                                       | b                     | L                                      |
| 6   | 1/8"           | 10.0                | 30                                      | 11                    | 50                                     |
| 8   | 1/4"           | 14.0                | 30                                      | 11                    | 50                                     |
| 10  | 3/8"           | 17.2                | 30                                      | 12                    | 50                                     |
| 15  | 1/2"           | 21.4                | 35                                      | 15                    | 65                                     |
| 20  | 3/4"           | 26.7                | 40                                      | 17                    | 65                                     |
| 25  | 1"             | 33.4                | 40                                      | 20                    | 65                                     |
| 32  | 1 1/4"         | 42.2                | 50                                      | 21                    | 75                                     |
| 40  | 1 1/2"         | 48.3                | 50                                      | 21                    | 75                                     |
| 50  | 2"             | 60.3                | 50                                      | 26                    | 85                                     |
| 65  | 2 1/2"         | 76.1                | 60                                      | 28                    | 85                                     |
| 80  | 3"             | 88.9                | 70                                      | 31                    | 95                                     |
| 100 | 4"             | 114.3               | 80                                      | 35                    | 100                                    |
| 125 | 5"             | 139                 | 80                                      | 35                    | 100                                    |
| 150 | 6"             | 114.3               | 80                                      | 35                    | 100                                    |

Ölçüler mm olarak verilmiştir.  
Çelik ve paslanmaz üretilebilir.

Dimensions are in mm.  
Steel and stainless steel can be produce.

**6 MT'YE KADAR FARKLI UZUNLUKLARDA ÜRETİLEBİLİR.**