

KAYNAK BOYUNLU FLANŞ PN 63



TS EN 1092 - 1 + A1 TİP 11
DIN 2636

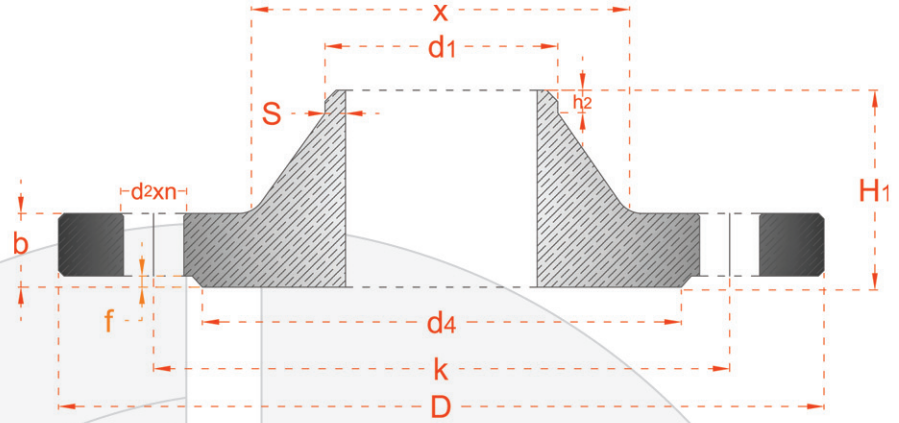


E.M.P.
www.emp.com.tr
www.empflans.com

WELDING NECK FLANGE PN 63



EN 1092 - 1 + A1 TYPE 11
DIN 2636



BORU/PIPE	FLANŞ /FLANGE						BOYUN/ NECK			RAISED FACE		DELİKLER/DRILLINGS			AĞIRLIK WEIGHT	
DN	d1	D	b		H1		X	S	h2	d4	f	k	n	vida /screw	d2	DIN /kg
			EN 1092-1	DIN	EN 1092-1	DIN										
10	17.2	100	20	20	45	45	32	1.8	6	40	2	70	4	M12	14	1.1
15	21.3	105	20	20	45	45	34	2.0	6	45	2	75	4	M12	14	1.2
20	26.9	130	22	22	48	48	42	2.6	8	58	2	90	4	M16	18	2.0
25	33.7	140	24	24	58	58	52	2.6	8	68	2	100	4	M16	18	2.6
32	42.4	155	24	24	60	60	62	2.9	10	78	2	110	4	M20	22	3.2
40	48.3	170	26	26	62	62	70	2.9	10	88	2	125	4	M20	22	4.0
50	60.3	180	26	26	62	62	82	2.9	10	102	3	135	4	M20	22	4.5
65	76.1	205	26	26	68	68	98	3.2	12	122	3	160	8	M20	22	5.7
80	88.9	215	28	28	72	72	112	3.6	12	138	3	170	8	M20	22	6.7
100	114.3	250	30	30	78	78	138	4.0	12	162	3	200	8	M24	26	9.6
125	139.7	295	34	34	88	88	168	4.5	12	188	3	240	8	M27	30	15.1
150	168.3	345	36	36	95	95	202	5.6	16	218	3	280	8	M30	33	21.9
200	219.1	415	42	42	110	110	256	7.1	16	285	3	345	12	M33	36	34.9
250	273.0	470	46	46	125	125	316	8.8	18	345	3	400	12	M33	36	49.6
300	323.9	530	52	52	140	140	372	11.0	18	410	4	460	16	M33	36	68.7
350	355.6	600	56	56	150	150	420	12.5	20	465	4	525	16	M36	39	94.6
400	406.4	670	60	60	160	160	475	14.2	20	535	4	585	16	M39	42	124.0

Ölçüler mm olarak verilmiştir.
Çelik ve paslanmaz üretilebilir.

Dimensions are in mm.
Steel and stainless steel can produce.