

KAYNAK BOYUNLU FLANŞ PN 40



TS EN 1092 - 1 + A1 TİP 11
DIN 2635

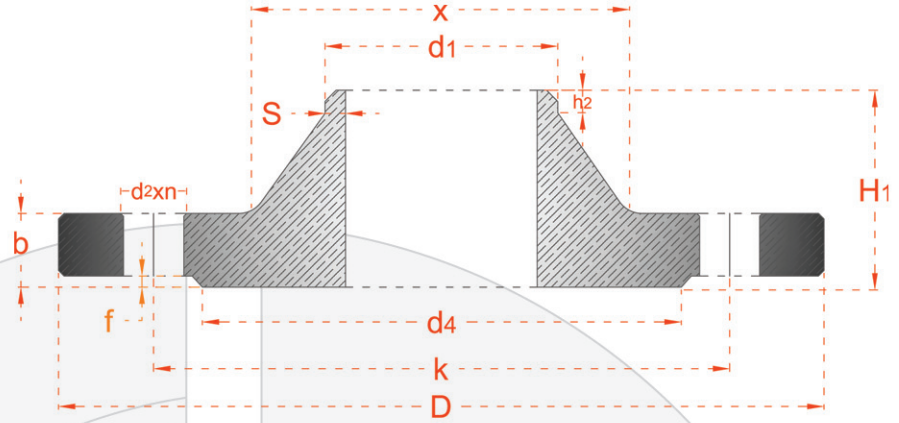


E.M.P.
www.emp.com.tr
www.empflans.com

WELDING NECK FLANGE PN 40



EN 1092 - 1 + A1 TYPE 11
DIN 2635



BORU/PIPE	FLANŞ / FLANGE						BOYUN/ NECK			RAISED FACE		DELİKLER/DRILLINGS			AĞIRLIK WEIGHT		
	DN	d1	D	b		H ₁		X	S	h2	d ₄	f	k	n		vida /screw	d ₂
			EN 1092-1	DIN	EN 1092-1	DIN											
10	17.2	90	16	16	35	35	28	1.8	6	40	2	60	4	M12	14	0.7	
15	21.3	95	16	16	38	38	32	2.0	6	45	2	65	4	M12	14	0.8	
20	26.9	105	18	18	40	40	40	2.3	6	58	2	75	4	M12	14	1.1	
25	33.7	115	18	18	40	40	46	2.6	6	68	2	85	4	M12	14	1.2	
32	42.4	140	18	18	42	42	56	2.6	6	78	2	100	4	M16	18	1.8	
40	48.3	150	18	18	45	45	64	2.6	7	88	3	110	4	M16	18	2.3	
50	60.3	165	20	20	48	48	75	2.9	8	102	3	125	4	M16	18	2.8	
65	76.1	185	22	22	52	52	90	2.9	10	122	3	145	8	M16	18	3.7	
80	88.9	200	24	24	58	58	105	3.2	12	138	3	160	8	M16	18	4.8	
100	114.3	235	24	24	65	65	134	3.6	12	162	3	190	8	M20	22	6.5	
125	139.7	270	26	26	68	68	162	4.0	12	188	3	220	8	M24	26	9.0	
150	168.3	300	28	28	75	75	192	4.5	12	218	3	250	8	M24	26	11.5	
200	219.1	375	34	34	88	88	244	6.3	16	285	3	320	12	M27	30	21.5	
250	273.0	450	38	38	105	105	306	7.1	18	345	3	385	12	M30	33	34.9	
300	323.9	515	42	42	115	115	362	8.0	18	410	3	450	16	M30	33	49.7	
350	355.6	580	46	46	125	125	408	8.8	20	465	4	510	16	M33	36	68.1	
400	406.4	660	50	50	135	135	462	11.0	20	535	4	585	16	M36	39	96.5	
450	457	685	57	50	135	135	500	12.5	20	560	4	610	20	M36	39	99.7	
500	508	755	57	52	140	140	562	14.5	20	615	4	670	20	M39	42	117.0	
600	610	890	72	56	150	150	666	15.0	20	735	4	795	20	M45	48		

Ölçüler mm olarak verilmiştir.
Çelik ve paslanmaz üretilebilir.

Dimensions are in mm.
Steel and stainless steel can be produce.